

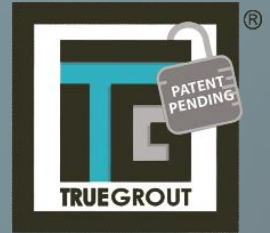


DFC - Densified Foam Core

Contains no wood

100% WATERPROOF FLOORING

TRUE GROUT VINYL FLOORING



Plaza

The True Grout Truth!

- Our revolutionary patented True Grout technology is the latest creative innovation in the vinyl flooring market. It is a vinyl layer with extra scratch-resistant UV polyurethane fused to a rigid DFC* backing, waterproof and mildew resistant with a grout line that looks truer than life.
- True Grout is offered in tile and plank Format.
- Designs and colors range from natural wood visuals to porcelain and travertine looks.
- 100% waterproof and resistant to all incidents of everyday life.
- Resistant to bacteria and mold.
- Can be installed over any rigid subfloor.
- Can be installed in any room of your house.
- Easy to install with the glueless clic system.
- Wear layer of 0.5 mm / 20 Mil, cured UV polyurethane for better protection against scratches and gouges.
- Easy to clean.
- PURE product for health living contains no V.O.C. or Phthalates, Floorscore approved.
- *DFC: Densified foam core.



Corporate Office : 2655 Dawin Road N., Jacksonville, FL 32207 P:888.336.3015 F:904.281.7706

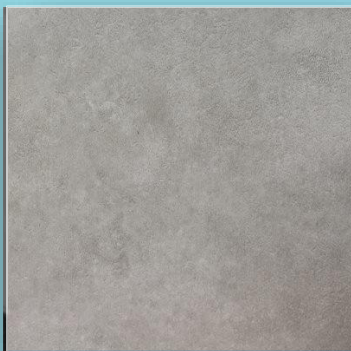
Custom Wholesale Floors, Inc. www.uniflooraqua.com www.cwf.com



PLAZA TRUE GROUT



MESA



GREYSTONE



ONYX



STERLING



TEMPEST



7mm

Wear layer:
0.5 mm / 20 MIL

Specs:
7mm x 12" x 24"
7mm x 302mm x 604mm

Carton:
19.63 ft²

- ✓ 100% waterproof DFC® board
- ✓ Formaldehyde free, Phthalate free
- ✓ FloorScore
- ✓ Glueless application installation system
- ✓ ISO Certified 9001 & 14001
- ✓ Lifetime limited residential warranty
- ✓ 15 year light commercial warranty

100%
WATERPROOF





PLAZA TRUE GROUT



CONSTRUCTION

- 1** UV cured Polyurethane
- Inhibits bacteria
 - Easy to clean
 - Prevents discoloration
 - Provides stain resistant

- 2** Wear layer 0.5mm / 20MIL
- protection against excessive wear
 - Rated for commercial use
 - Protection against scratches and gouges

- 3** Printed film design layer
- High resolution prints that offer a very realistic interpretation of natural wood and stone materials.

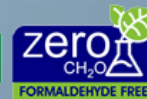
- 4** Vinyl layer

- 5** DFC (Densified Foam Core)
- Contains no wood

- Will not expand or contract
- Glueless profile
- Waterproof core
- High density core that offers high resistance to indentations
- Naturally resists mold and mildew

Features

- Vinyl layer over DFC* core(* Densified foam core) with a grout line design in a Tile format.
- Artistic concrete effect and design, embossed. Warm and comfortable underfoot.
- 100% waterproof, ideal product for the kitchen, bathroom, basement and entrance way.
- Quick & simple installation, hypoallergenic.
- Assembly system: Click.
- Planks per box: 10.
- Plank size (L x W x H): 7mm x 302mm x 604mm (7mm x 24" x 12")*
- Coverage per box: 1.824 m² (19.63 sq. ft.)*
- Lifetime structural residential warranty and 15 year light commercial warranty.
- Vinyl wrapped matching transition and reducer molding available.
- PURE product for health living contains no V.O.C. or Phthalates, Floorscore approved.



Corporate Office : 2655 Dawin Road N., Jacksonville, FL 32207 P:888.336.3015 F:904.281.7706

Custom Wholesale Floors, Inc.

www.uniflooraqua.com

www.cwf.com